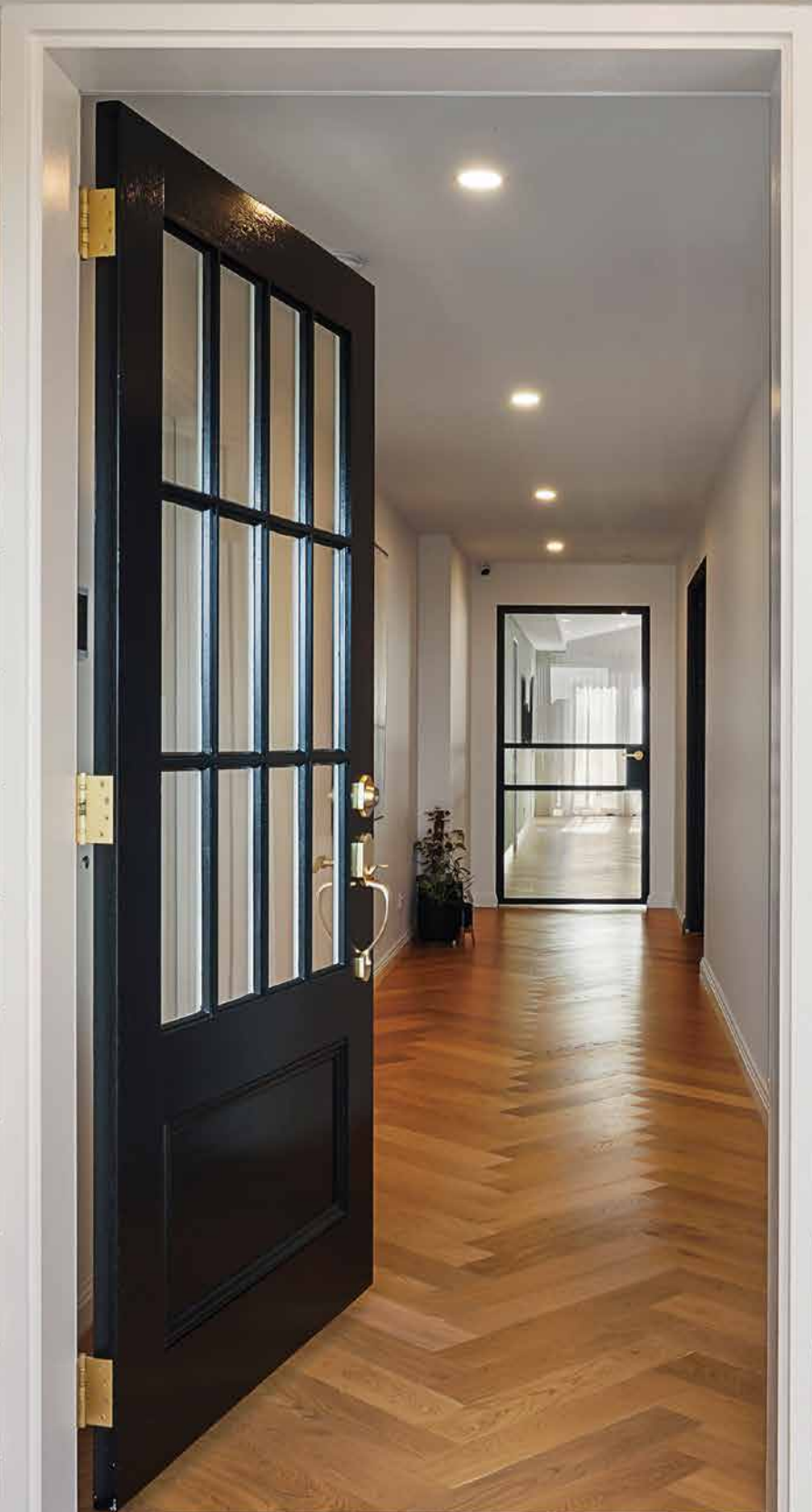


TRIBECCA
CONSTRUCTIONS



Tribecca Construction is a family-owned and operated luxury home builder based in Melbourne, specialising in the leafy Inner Eastern and Southeastern suburbs and Melbourne's Bayside. We provide a highly personalised approach and have a proud reputation for finishing projects on time, on budget, and to the highest industry standards.



At Tribecca, we pride ourselves on designing and building luxury custom homes that are unique to every client. We capture your personal style, understand your surroundings and build a home that's meaningful to you. We take the stress out of building by guiding you seamlessly through the stages of construction and by ensuring your expectations are met at each stage. Your choices will lead the way from the planning stage to the unique finishing touches.

The Tribecca team is a collective of well-experienced, trusted professionals, including architects, draftsperson, town planners, builders and tradespeople. Each of our building projects is overseen by a dedicated Project Manager with a wealth of construction expertise. This company structure is the key to our success as it establishes open lines of communication and allows us to respond quickly and decisively to meet our customers' expectations.

Our core values are based on building strong long-term relationships with every client, so if you're wondering why you should choose Tribecca Construction to build or renovate, put simply, it's because we care, we take immense pride in our craft, and we want you to enjoy the building or renovating experience.

Knockdown & Rebuild

If you love where you live, but you're not happy with your current home or if you would like to develop a piece of land with an undesirable existing dwelling, then consider a Tribeca knockdown and rebuild. We will work with you to create a home that suits your lifestyle and budget; we take care of everything from site assessment and council approvals to design and demolition.





Custom Built New Homes

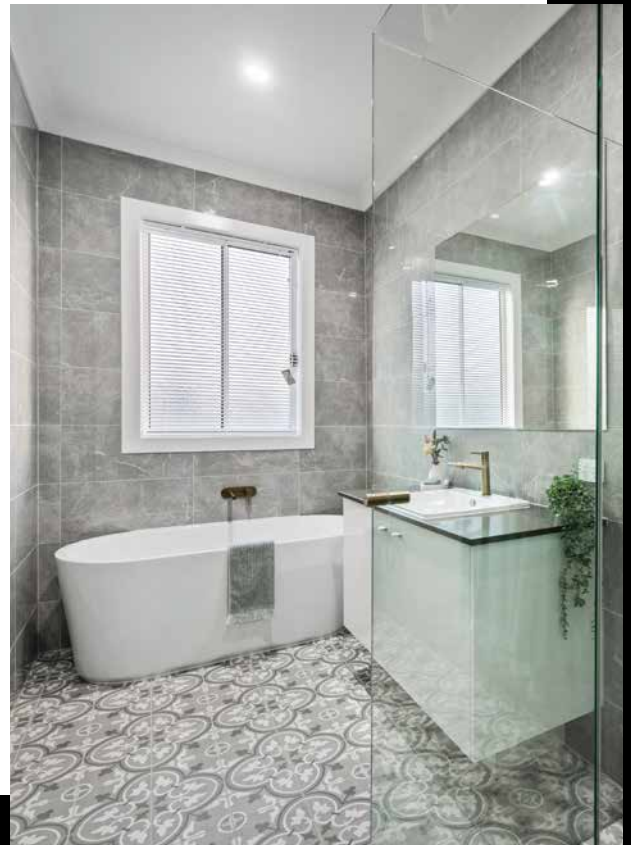
Build your Dream Home!
A custom-designed home gives you complete flexibility to create YOUR perfect home for your unique family on your parcel of land, in your budget.

If you already have plans for your new home, Tribecca can turn these plans into reality, or we can work with you to create your dream. If you have plans and are unsure about the design and floor plan, we can assess them and provide recommendations and advice.



Extensions & Renovations

If your home is dated, tired or simply too small for your growing family, then extending and renovating can be a great alternative to moving. No matter what the size, every extension requires a custom-designed solution. At Tribecca, we can design and build an extension that meets your changing lifestyle needs and complements your home's current architecture and design.



Bathroom Renovations

Our expert team at Tribeca Constructions are the best in the business when it comes to bathroom renovations across the South Eastern suburbs and Melbourne's Bayside areas and pride ourselves on our experience, skill and dedication to excellence.

We aim to make your bathroom renovation a stress-free experience with the goal of delivering a functional and practical bathroom bringing new life to your home.



Kitchen Renovations

The kitchen is the heart of your home. At Tribeca Constructions, we will help you create a kitchen design and finish that is both functional, yet practical to suit your lifestyle.

We specialise in high quality kitchens, built for life, and will work with you to create your dream kitchen to suit your needs and budget. I have also included some images that you can use.



Design

'Every great design begins with an even better story.' Lorinda Mamo

At Tribecca, we want to learn your story.

We need to know about you, your family and lifestyle, your plans for the future and then, of course, your expectations and budget.

We'll spend the time to discover what features and inclusions you require in your new home and even make some suggestions and finally, we'll analyse your site to make sure your dreams can become a reality.

Once the design concept is finalised, we move on to planning.



Plan

It takes as much energy to 'wish' as it does to 'plan'. Eleanor Roosevelt

At Tribeca, we don't waste time wishing because we spend time planning.

From the initial design concept, detailed plans and costings are developed with full specifications of the finished home. We will assist with all town planning and building permits and ensure you have all the information needed to enable you to visualise your new home.

Throughout the entire planning phase, changes can be accommodated. We are only a phone call away and remain committed to our responsibility to deliver a fantastic outcome for our customers.



Build

'When we build, let us think that we build forever.' John Ruskin

Building your new bespoke home is the most exciting phase in the process.

Tribeca engages the best tradespeople and provides them with strict but realistic time frames ensuring quality is never compromised. Your dedicated Project Manager will keep you abreast of progress at every stage of construction, and we guarantee you'll get caught up in the buzz of seeing your dream home come to life.

Before you know it, you will be collecting your keys and moving in.



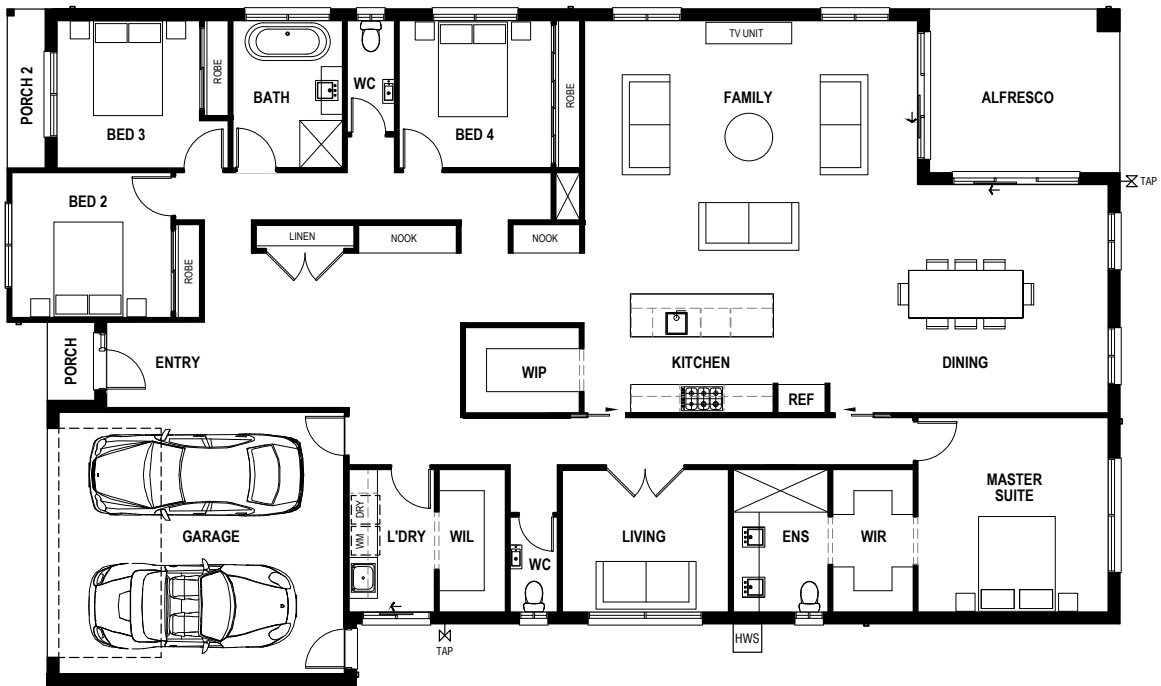
Allura Facade

Allura 32

04
 02
 02
 32.76sq

Block Width 16m
 Block Depth 32m
 Facade Option: Allura

Suiting a larger block this impressive single storey four bedroom home has been designed with a real emphasis on family living with the sizeable kitchen, dining and family area being the focal point. The master bedroom is tucked away nicely at the rear with the remaining bedrooms at the front giving parents privacy. There is space for everyone with a separate living room and ample storage throughout.



More options



Urban Facade

Soho 26

04
 02
 02
 26.42sq

Block Width

Block Depth

Facade Options:

12.5m

28m

- Soho
- Urban
- Grove
- Bellview
- Coastal

The Soho 26 is a beautifully designed four bedroom family home packed full of features including open plan living, master bedroom with his and hers walk in robes and large alfresco perfect for entertaining.



More options



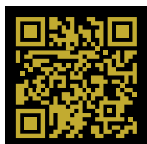
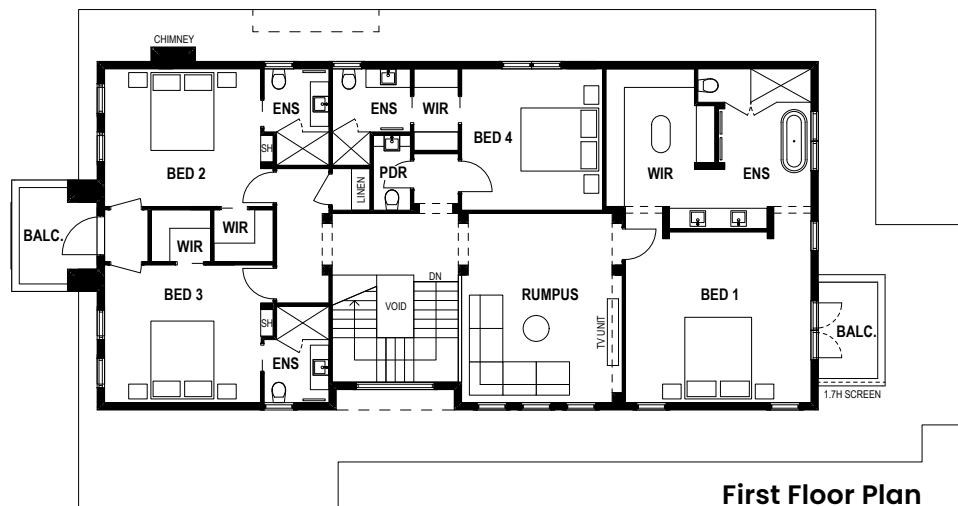
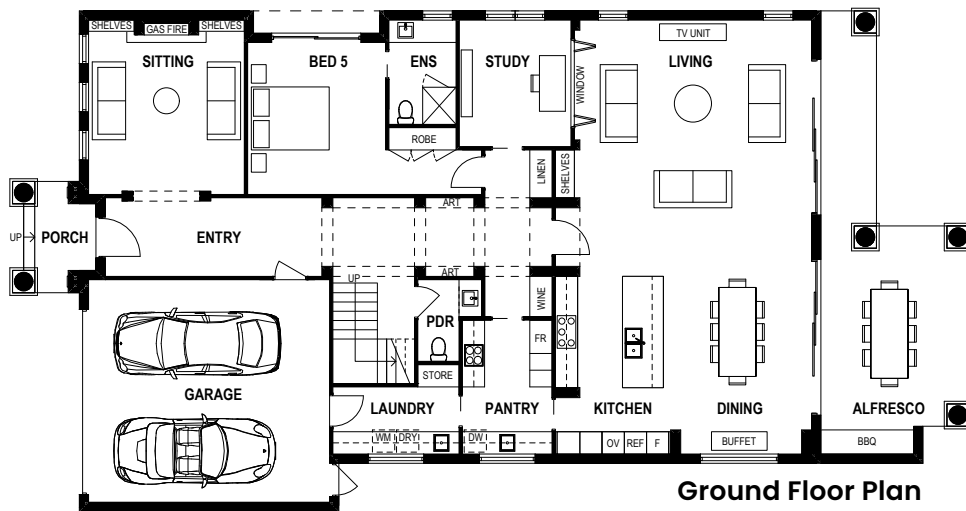
Alto Facade

Alto 52

05
 05
 02
 52sq

Block Width Block Depth Facade Option:
 15.2m 39.6m Alto

A Georgian-style, five bedroom home with an impressive facade & large living spaces. Plenty of space available to entertain your guests.



More options



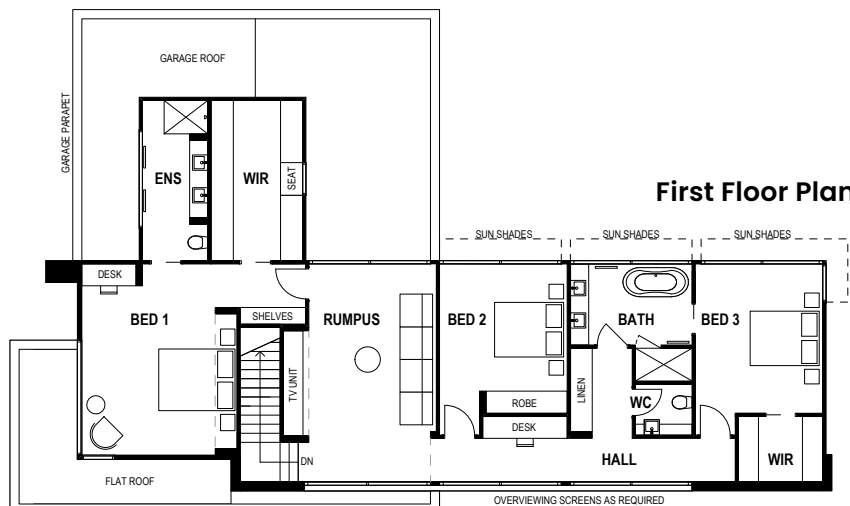
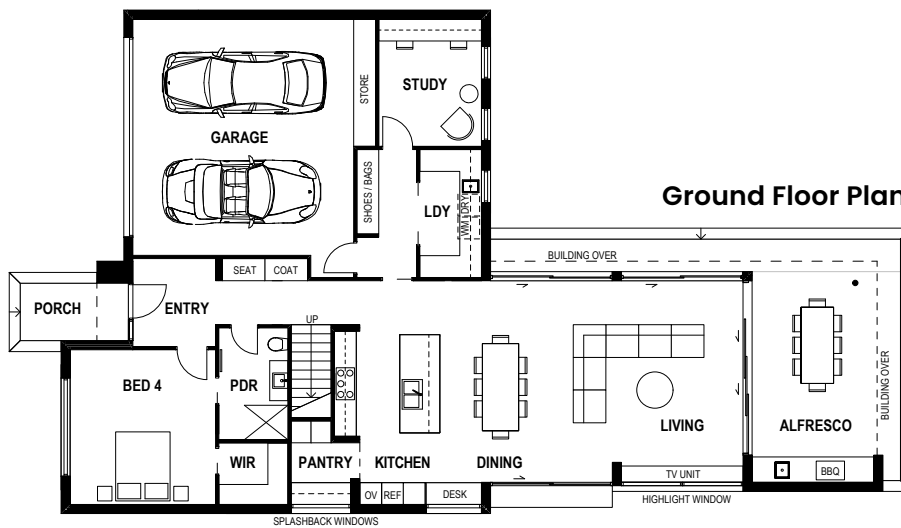
West Chelsea Facade

West Chelsea 40

04
 03
 02
 40sq

Block Width Block Depth Facade Option:
 12.5m 28m West Chelsea

A stylish four bedroom home for those who enjoy the modern-contemporary style and outdoor entertaining. Plenty of backyard space available for those summer parties and family activities.



More options



☎ 1300 481 680

Suite 7/2 Gilda Court
Mulgrave
Melbourne VIC 3170

www.tribeccaconstructions.com.au